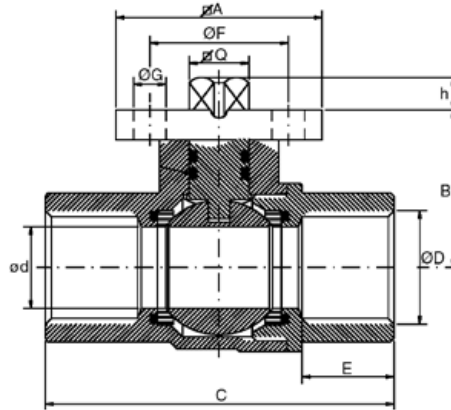


Belimo Valve - Fuel Rated

2-Way Ball Valve Plated Brass



Dimensions

D BSP	1/2"	3/4"	1"	1 1/4"	1 1/2"	2"
d	15	20	25	32	38	47
A	38 x 38	38 x 38	50 x 50	50 x 50	50 x 50	50 x 50
B	29	32	36	41	57	64
C	65	75	86	95	101	120
ØG	6	6	7	7	7	7
E	17	19	21	22	22	25
F	36	36	50	50	50	50
h	6	7	11	10	12	11
Q	9 x 9	9 x 9	9 x 9	9 x 9	11 x 11	11 x 11
Drilling	F03	F03	F05	F05	F05	F05

Materials

Body	Forged Brass - Nickel Plated
Ball	Brass - Chromed
Stem Seal	VITON
Ball Seal	PTFE
Temp. Range	-20 to +95°C
Thread Ends	Gas UNI ISO 228

Size	Max Pressure BAR	Break Away Torque NM
1/2"	40	3
3/4"	40	4
1"	40	5
1 1/4"	32	10
1 1/2"	30	15
2"	30	15