

STEAM - WATER MIXER



GHEYSER®



STEAM / WATER MIXER

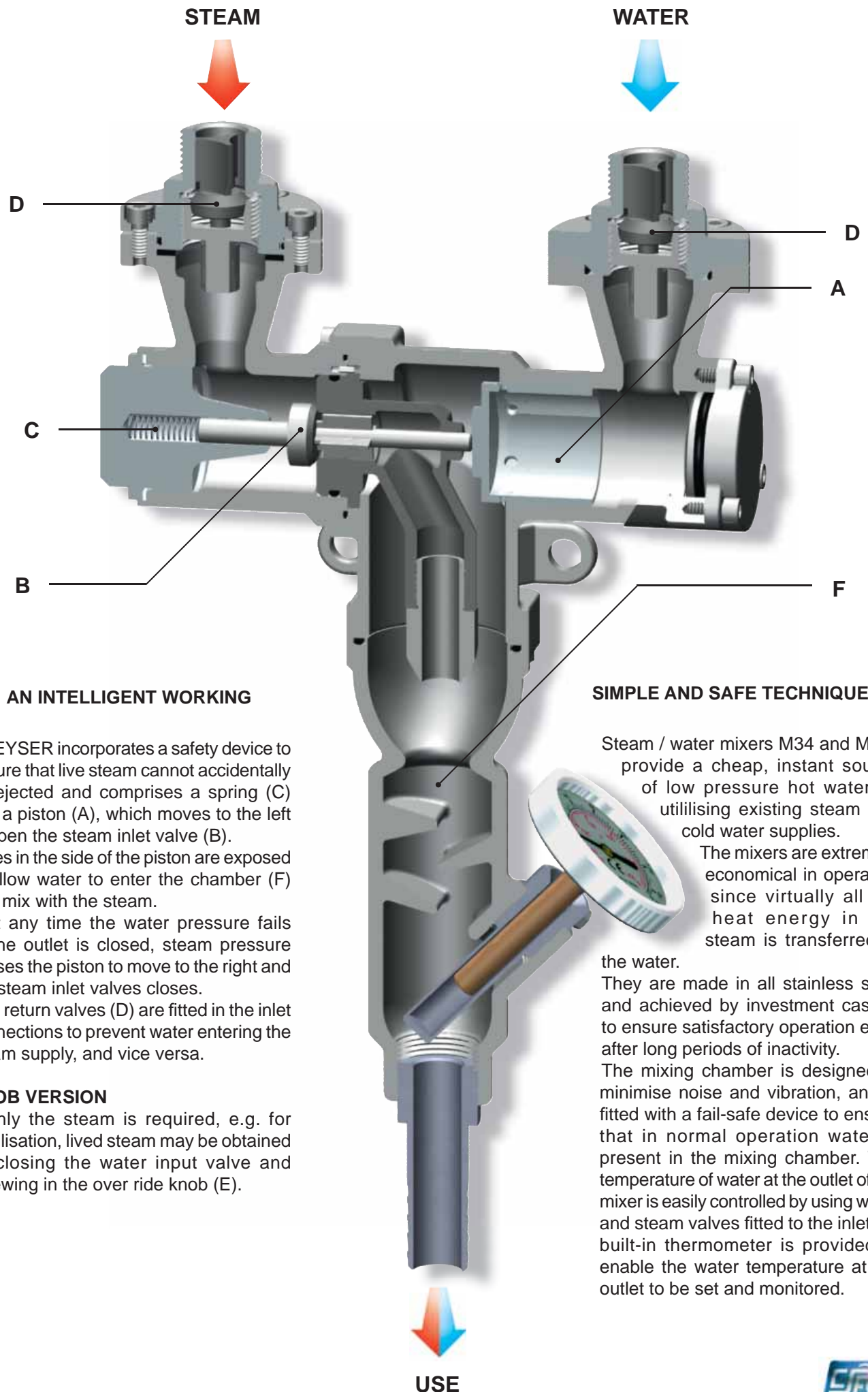
UNIQUE FEATURES OF GHEYSER

- Cheap, instant hot water.
- Energy saving.
- No tanks required.
- Ideal alternative to other less efficient and much more expensive heat exchangers.
- Two sizes of mixer are available: M34 and M114. Sized according to delivery flowrate required.
- Suitable for food and brewing industries, delicatessen factories, slaughter-houses, cheese-dairies, hospitals and general plant maintenance.
- Food sterilization and other special applications are possible on request.
- Safe, cost effective, quiet operation and easy to install.
- Made in stainless steel. Assuring maximum hygienic requirements for all applications.
- No moving parts or electrical connections. Needs only to be connected to steam and water supplies. Does not need electro-mechanical maintenance.
- You can wash, sterilize and produce hot water economically and effectively.
- A range of accessories available for any application.
- Temperature of outlet water adjustable from 35°C to 95°C.
- Designed, manufactured, guaranteed and supplied directly by CSF INOX S.p.A.



GHEYSER®

ECONOMY - EFFICIENCY IN INDUSTRIAL PROCESSES

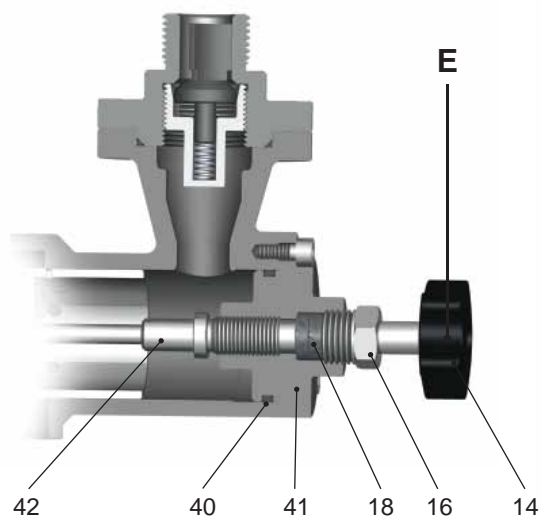


OPERATING CONDITIONS

The knob version, besides the steam-water mixture, allows only the steam to be used.

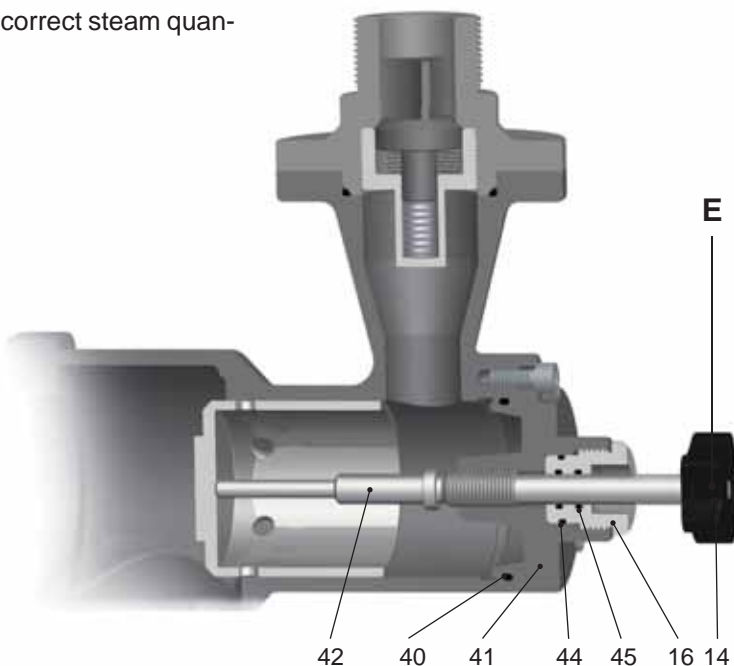
By closing the water input and adjusting the knob, the correct steam quantity is obtained.

This version is an alternative to the standard one.



STEAM KNOB KIT M34 (cod. &WMIB034/KITV)

14	Knob	Plastic	RCHZZ0200	1
16	Gland nut	AISI 304	TJAAA0021	1
18	Gland packing	--	TGFTV10163	2
40	O-ring 3137	EPDM	RAAGM3137	1
41	Plug, water side	AISI 304	TJAAA0220	1
42	Shaft	AISI 304	TJAAA0230	1
Ref.	Denomination	Material	Code	Q.ty



STEAM KNOB KIT M114 (cod. &WMIB114/KITV)

14	Knob	Plastic	RCHZZ0200	1
16	Lockring	AISI 304	TJAAA0430	1
40	O-ring 3212	EPDM	RAAGM3212	1
41	Plug, water side	AISI 304	TJAAA0420	1
42	Shaft	AISI 304	TJAAA0425	1
44	O-ring 2075	EPDM	RAAGM2075	1
45	O-ring 2037	EPDM	RAAGM2037	2
Ref.	Denomination	Material	Code	Q.ty

A WIDE RANGE OF ACCESSORIES FOR ALL REQUIREMENTS

HOSE HANGER
Round Ø AISI 304



STEAM HOSE
3/4" (Ø 19x30) 120°C 86 Bar
1" (Ø 25x38) 120°C 69 Bar



SPRAY GUN RB 65
Antishock body
Adjustable spout with lever



WATER/STEAM VALVES



**STAINLESS STEEL
HOSE REEL**



OPERATING CONDITIONS



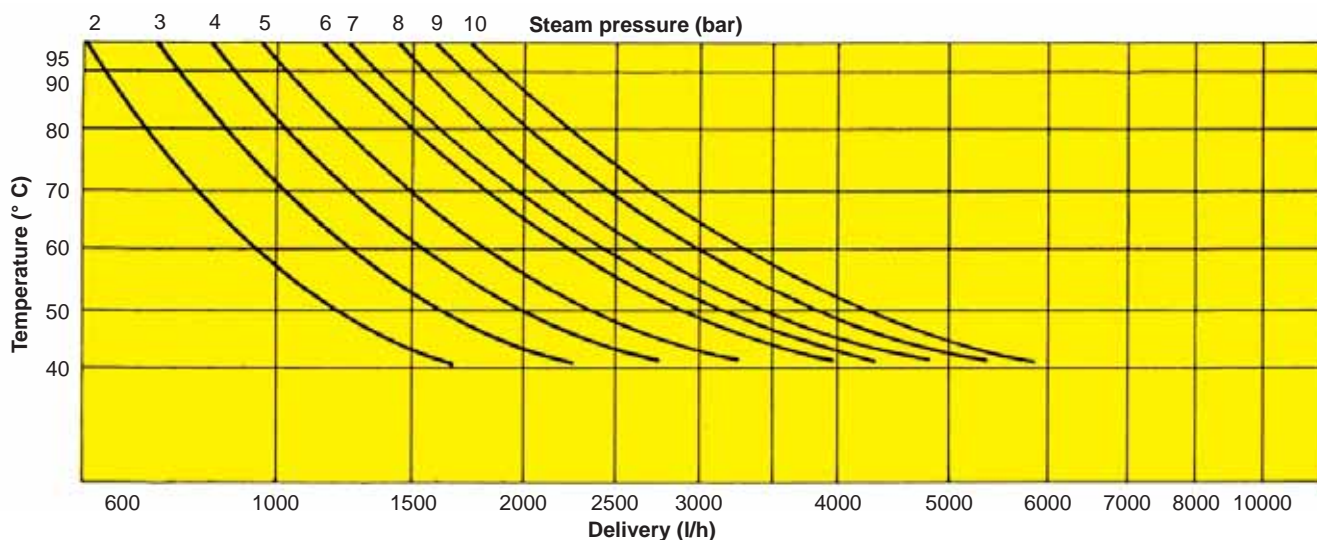
To ensure correct operation of the mixer the steam inlet pressure must be:

- Minimum 2,5 bar.
- Equal to or not more than 3,5 times that of the water for Gheyser M34 .
- Equal to or not more than 2,5 times that of the water for Gheyser M114.

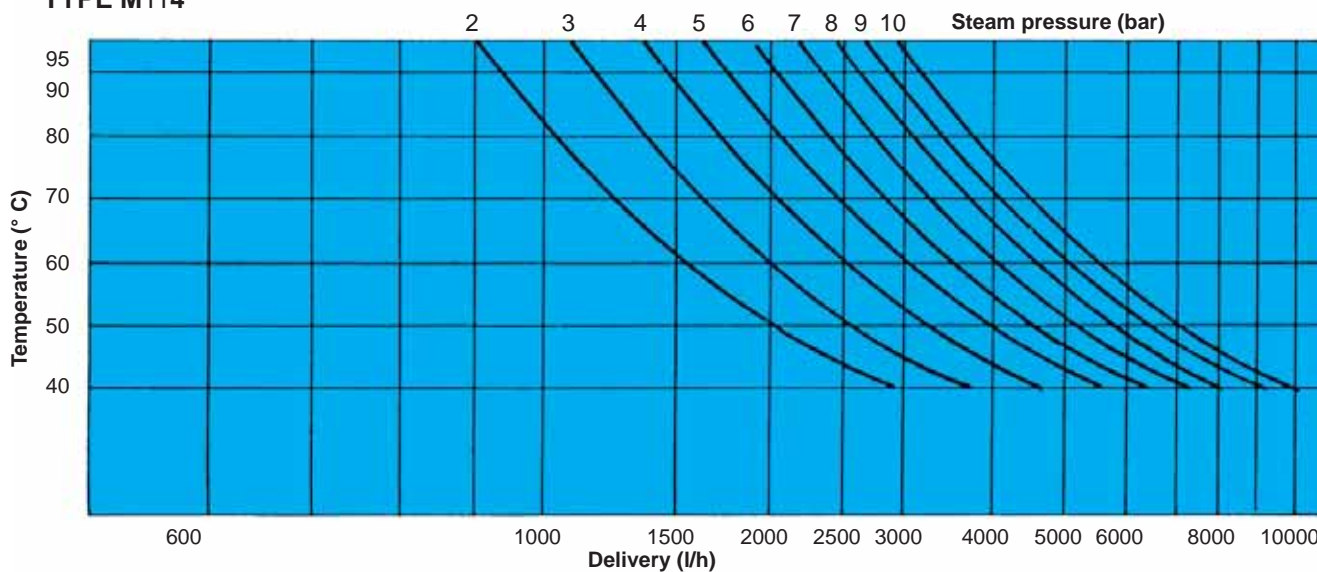
It is recommended that a strainer is fitted at the steam inlet in order to avoid any impurity.

PERFORMANCES CURVES WITH WATER AT 15°C

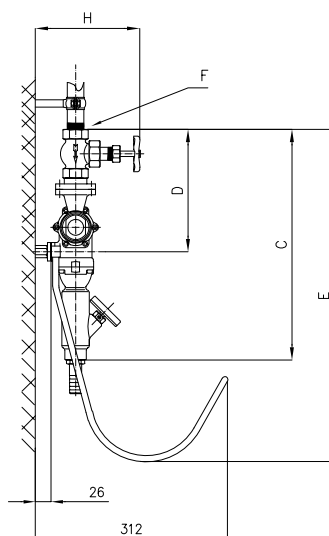
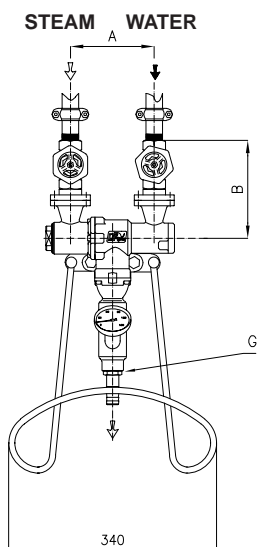
TYPE M34



TYPE M114

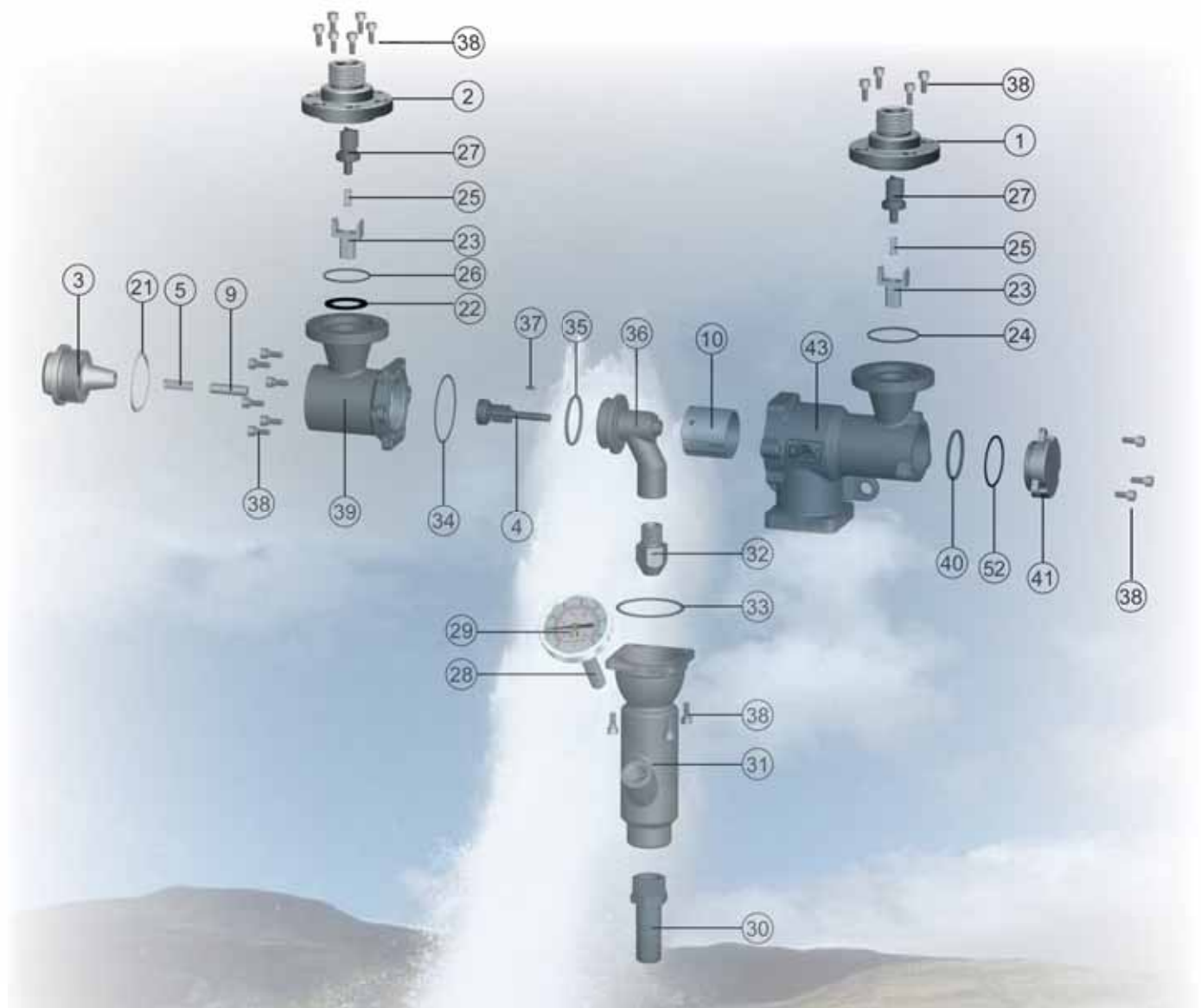


OVERALL DIMENSIONS



Type	M 34	M 114
A mm	137	196
B mm	143	211
C mm	361	530
D mm	189	275
E mm	576	658
F	3/4" G	1 1/4" G
G	3/4" G	1 1/4" G
H	172	208
Weight Kg	6,6	14,6

EXPLODED DRAWING OF MIXER M34 TYPE



23	NRV shutter guide	2
22	Gasket	1
21	Gasket	1
10	Water shutter	1
9	Steam shutter shaft	1
5	Steam shutter spring	1
4	Steam shutter	1
3	Plug, steam side	1
2	NRV flanged casing, steam side	1
1	NRV flanged casing, water side	1
Pos.	Denomination	Q.ty

33	O-ring	1
32	Steam nozzle	1
31	Mixing box	1
30	Hose connector	1
29	Thermometer	1
28	Thermometer bulb	1
27	NRV shutter	2
26	O-ring	1
25	NRV shutter spring	2
24	O-ring	1
Pos.	Denomination	Q.ty

52	Gasket	1
43	Flanged casing, water side	1
41	Plug, water side	1
40	O-ring	1
39	Flanged casing, steam side	1
38	Screw, socket head	23
37	Pin	1
36	Steam shutter seat	1
35	O-ring	1
34	O-ring	1
Pos.	Denomination	Q.ty



PUMP ENGINEERING Ltd

Riverside Industrial Estate, Littlehampton

West Sussex, BN17 5DF, England

Tel: 01903 730900

Fax: 01903 730234

e-mail: sales@pumpeng.co.uk Web: www.pumpeng.co.uk



cod. DCATWGB